

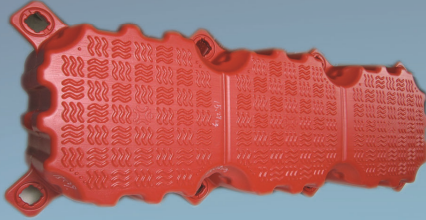


# The Pontoon & Dock Company Ltd

QUALITY MARINA EQUIPMENT

**P&D<sup>3</sup> - Modular Cube System**

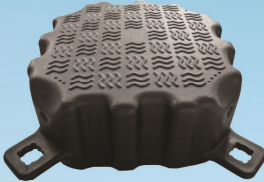
## **CUBE SPECIFICATION**



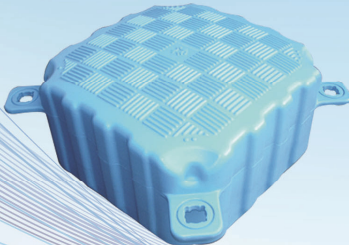
Name: Corrugated Triple Small Cube  
Size: 1500x500x400mm  
Weight: 17kg/pc (+3%)  
Load Capacity: 360kg/aqm  
Quantity/Container:  
80pcs/20'GP; 200pcs/40'HQ.



Name: Corrugated Single Small Cube  
Size: 500x500x400mm  
Weight: 7kg/pc (+3%)  
Load Capacity: 360kg/sqm  
Quantity/Container:  
240pcs/20'GP; 600pcs/40'HQ.



Name: Corrugated Single Small Cube  
Size: 500x500x250mm  
Weight: 6kg/pc (+3%)  
Load Capacity: 225kg/sqm  
Quantity/Container:  
440pcs/20'GP; 1040pcs/40'HQ.



Name: Large Cube  
Size: 666x666x400mm  
Weight: 11kg/pc (+3%)  
Load Capacity: 350kg/sqm  
Quantity/Container:  
144pcs/20'GP; 360pcs/40'HQ.



Name: Double Small Cube  
Size: 1000x500x400mm  
Weight: 12.5kg/pc (+3%)  
Load Capacity: 350kg/sqm  
Quantity/Container:  
120pcs/20'GP; 300pcs/40'HQ.



Name: Single Small Cube  
Size: 500x500x400mm  
Weight: 7kg/pc (+3%)  
Load Capacity: 350kg/sqm  
Quantity/Container:  
240pcs/20'GP; 600pcs/40'HQ.

# CUBE ACCESSORIES



Large Service Cube



Half Small Cube



Pile Cube



Short Pin



Short Screw & Nut



Cleat



Washer



Long Pin



Double Layer Screw & Nut



Long Screw & Nut



Small Ramp



HDPE Handrail



St. Steel Handrail



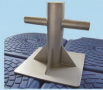
Boat Fender



Pin Connector



Double Bollard



Single Bollard



St. Steel Cleat



Small Bollard



Docking Connector



Inner Chain Connector



Outer Chain Connector



Inner Pile Guide



Outer Pile Guide



10cm Outer Pile Guide



H Steel Pile Guide



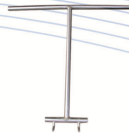
Swimming Ladder



Aluminum Gangway



Heavy Duty Winch Set



Torque Wrench



Nut Wrench



New Nut Wrench



Flooding Fey



HDPE Handrail Wrench



Steel Wrench

## ***APPLICATION***

Marinas, jetty

Jet ski docks

Drive on docks

Floating work platforms used in industry, communal projects, and navy engineering, etc

Aquatic stages for water shows and activities

Pontoon bridges

Landing for sailors, rowers, water-skiers, surfers or navy vessels, etc

Net cages for aquaculture

Swimming pool, swimming area

Floating walkways

Bathers' play rafts

Bases of outdoor aquatic beer bars, coffee shops, rest shelters, floral decorative displays etc

Motorized barges (powered by electric motors)

Flotation anchored raft islands

Judge-stages for aquatic sport games

Water-boundary markers

Enclosures and separators for water treatment plants

Aquatic life-guarding platforms

Breakwaters



## ***BENEFITS***

Safe: with patterns on the top surface and no sharp corners, P&D's floating pontoon is free from the dangers of slippery surfaces, splinters and rusty nails usually found on wooden walkways.

Economical: maintenance-free and low upkeep costs.

Convenient and simple to construct:

can be easily and quickly installed and dismantled.

Versatile: one connecting pin holds four modules together;

meaning any size or shape can be configured on the water quickly and easily.

Durable: resistant to UV rays, frost, seawater, corrosion, chemicals and oil.

Strong: each float's tensile strength is over 1950kg approved by the official authorities, test speed is 50mm/min.

Recyclable: HDPE material, 100% recyclable, environmentally friendly.



# Floating Dock



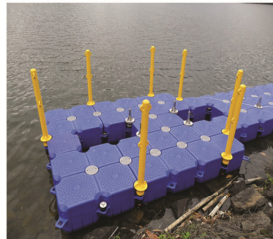
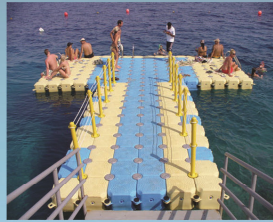
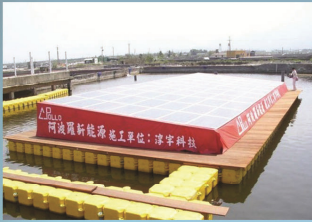


# Drive On Dock, Jet Ski Dock





# Pontoon Platform



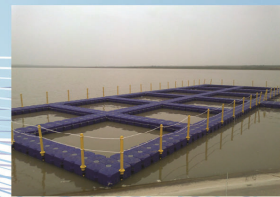
# Pontoon Bridge



## Swimming Pool



## Fish Farm



**Pontoons for all your needs!**

## **The Pontoon & Dock Company Ltd**

Company Reg No. 0703 4968

VAT No. 981 788 066

**Email:** [sales@pontoonanddock.com](mailto:sales@pontoonanddock.com)

**Website:** <http://www.pontoonanddock.com>

Company Address  
Repton House  
Bretby Business Park  
Bretby  
Burton upon Trent  
Staffordshire  
DE15 0YZ

Telephone 01283 208 891

Mobile 07530 597656